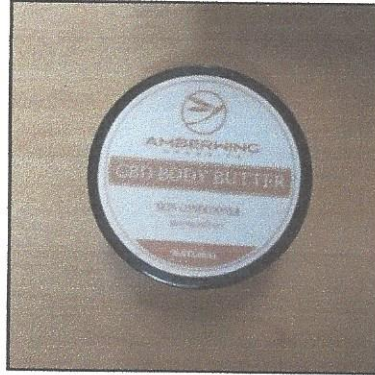


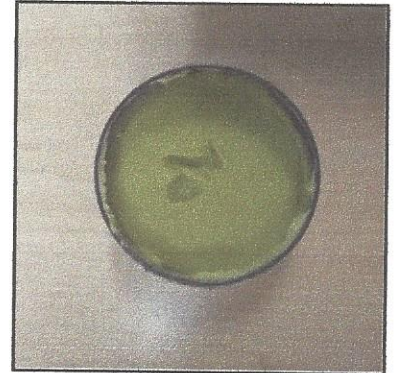
Certificate of Analysis

Client Name: Cool Clean Technologies, LLC	Matrix: Lotion
Client Address: 915 Blue Gentian Road Suite 400, Eagan, MN 55121	Date Received: 9/16/2019 3:30:00PM
Sample ID: CBD Body Butter- Skin Conditioner	Lab Sample ID: 1903804-01
Lot/Batch #:	Date of Report: 9/24/2019 2:45:43PM

Analysis	Requested (Yes/No)
Cannabinoid Profile	Yes
Terpene Profile	Yes
Aflatoxins	No
Heavy Metals	No
Residual Solvents	No
Microbial Testing	No
Pesticides	No



Sample, packaged



Sample, actual

Cannabinoid Profile 1903804-01 CBD Body Butter- Skin Conditioner/Natural

Analyte	Result	RL	Units	Analysis Method	Date Analyzed	Notes
Total CBD	0.518	0.0938	% by Weight	HPLC	9/21/19 7:16 am	
Total THC	0.0261	0.0188	% by Weight	HPLC	9/21/19 7:09 am	
Cannabidiol (CBD)	0.426	0.0500	% by Weight	HPLC	9/21/19 7:16 am	R-07
Cannabigerol (CBG)	<0.0100	0.0100	% by Weight	HPLC	9/21/19 7:09 am	R-07
Cannabidiolic Acid (CBDA)	0.106	0.0500	% by Weight	HPLC	9/21/19 7:16 am	R-07
Cannabinol (CBN)	<0.0100	0.0100	% by Weight	HPLC	9/21/19 7:09 am	R-07
Delta-9-Tetrahydrocannabinol (d9-THC)	0.0261	0.0100	% by Weight	HPLC	9/21/19 7:09 am	R-07
Cannabichromene (CBC)	0.0217	0.0100	% by Weight	HPLC	9/21/19 7:09 am	R-07
THCA-A	<0.0100	0.0100	% by Weight	HPLC	9/21/19 7:09 am	R-07

609 ms/Bottle

Terpene Profile 1903804-01 CBD Body Butter- Skin Conditioner/Natural

Analyte	Result	RL	Units	Analysis Method	Date Analyzed	Notes
(-)-Alpha-Bisabolol	0.0056	0.0040	% by Weight	EPA 8270D	9/17/19 3:01 pm	
(R)-(+)-Limonene	<	0.0040	% by Weight	EPA 8270D	9/17/19 3:01 pm	
alpha-Humulene	<	0.0040	% by Weight	EPA 8270D	9/17/19 3:01 pm	
alpha-Pinene	<	0.0040	% by Weight	EPA 8270D	9/17/19 3:01 pm	
beta-Myrcene	0.0042	0.0040	% by Weight	EPA 8270D	9/17/19 3:01 pm	
Geraniol	0.025	0.0040	% by Weight	EPA 8270D	9/17/19 3:01 pm	
Linalool	0.0077	0.0040	% by Weight	EPA 8270D	9/17/19 3:01 pm	
Terpinolene	<	0.0040	% by Weight	EPA 8270D	9/17/19 3:01 pm	
trans-Caryophyllene	0.0097	0.0040	% by Weight	EPA 8270D	9/17/19 3:01 pm	

[Handwritten Signature]

Bach Pham - Client Manager II

The results in this report apply to the samples analyzed in accordance with the chain of custody document. This analytical report must be reproduced in its entirety. All samples will be retained by Legend Technical Services, Inc. unless consumed in the analysis, for 30 days from the date of this report and then discarded unless other arrangements are made. ISO/IEC 17025:2005 Accredited, A2LA Certificate 2950.01.